



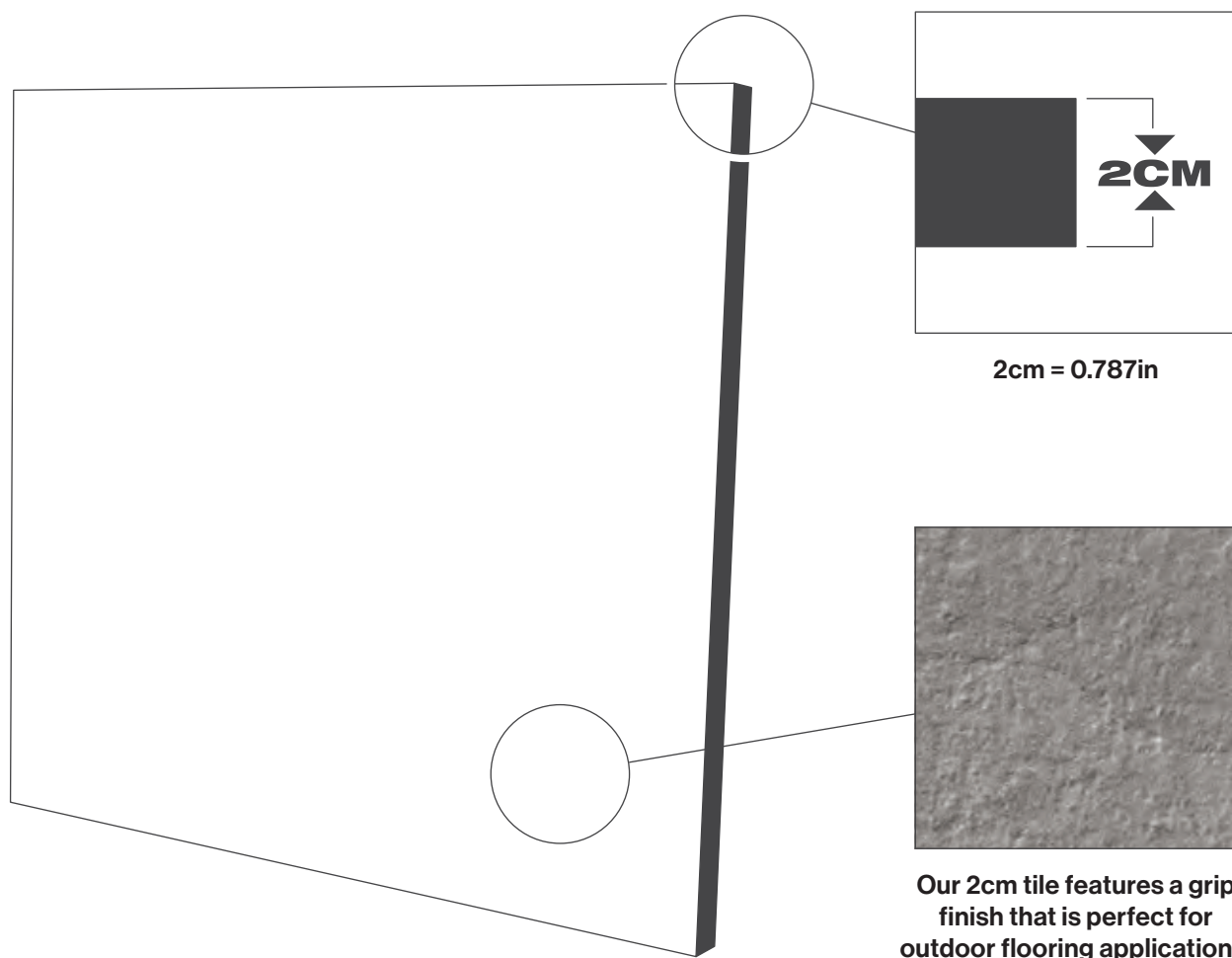
OUTDOOR

2CM

PORCELAIN PAVERS



MIKE[®] *stone*
Sustainable Tile, Made in the USA



✓ **MOOD WOOD** | HONEY 12" x 48"



OUTDOOR

PORCELAIN PAVERS



BENEFITS

pg. 2

+ONE

pg. 7



Chalk



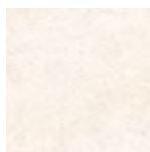
Greige



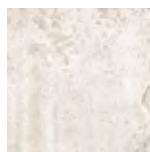
Ash

EARTH

pg. 11



Moon White



Miami White



Manhattan Grey



Light Grey



Multicolor



Dark Grey

FARMHOUSE LIVING

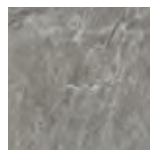
pg. 19



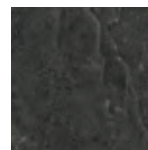
Alabaster



Pewter



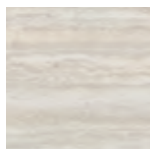
Millstone



Slate

LITH

pg. 23



Legacy White



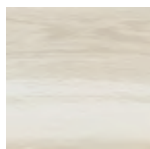
Antique Cream



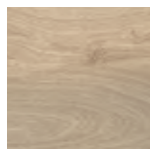
Heirloom Blue

MOOD WOOD

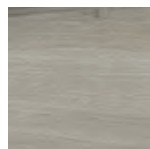
pg. 27



White



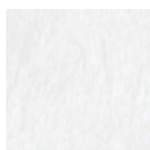
Honey



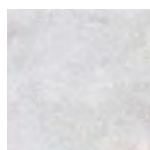
Grey

QUARTZ

pg. 31



Extra White



White



Grey

SPECIFICATIONS

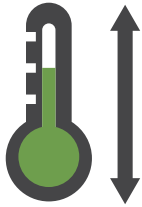
pg. 36

INSTALLATION METHODS

pg. 39

BENEFITS

OF MILE[®]stone OUTDOOR 2CM PORCELAIN PAVERS



Resistant to Thermal Shock

Won't break due to gradual or sudden temperature changes (-40°F — 210°F).



Made from Natural Raw Materials

Sourced locally within 500mi of our production facility, lowering our carbon footprint.



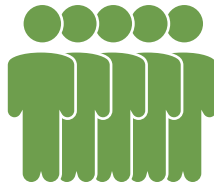
Unmatched Durability

Stronger and more resilient than any alternative paving solution.



Resists Microbial Growth and Damage

Unaffected by moss, mold, and verdigris.



Scratch and Stain Resistant

Scratch and stain resistant, outdoor porcelain pavers can handle high traffic areas.



Easy to Clean and Sanitize

No harsh chemicals needed to clean, nonporous material is resistant to stains.



Virtually No Maintenance

Once installed, pavers require minimal upkeep and are easy to replace.



Slip Resistant and Quick Draining

Perfect for pool decks, terraces, or even simple garden paths.



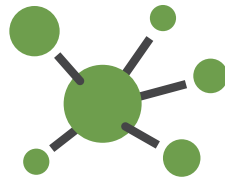
Easy To Install

Requires minimal materials and effort to install nearly anywhere.



Frost Resistant

Unaffected by frost or freezing since our pavers don't absorb water.



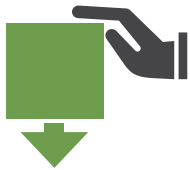
V.O.C. Free

Emits 0 VOCs to protect occupants and environmental health.



Cost-Over-Life Savings

With a 60+ year life expectancy, our pavers provide a low life cycle cost analysis.



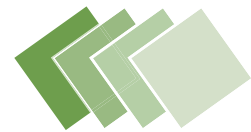
Versatile Installation Applications

Install over grass or gravel, mortared in or simply laid on the ground.



UV Resistant and Colorfast

Won't fade from UV exposure, retains original color over product life.



Available in a Broad Range of Styles

Styles range from stone, concrete, or wood looks in a variety of sizes.

✓ **QUARTZ** | GREY 24" x 24"







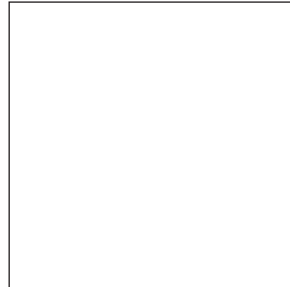


SIZES



24" x 48" Rectified

Chalk	1101841
Greige	1101842
Ash	1101843



24" x 24" Rectified

Chalk	1101414
Greige	1101415
Ash	1101416



12" x 48" Rectified

Chalk	1101411
Greige	1101412
Ash	1101413

COLORS



CHALK



GREIGE



ASH



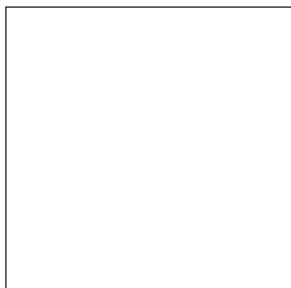
▲ **+ONE** | ASH 24" x 24"



▲ **+ONE** | CHALK 12" x 48" + 24" x 24"



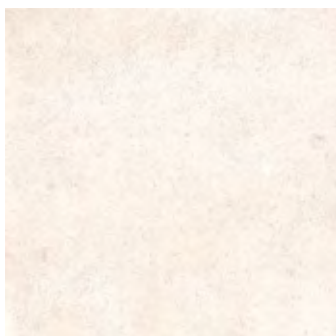
SIZES



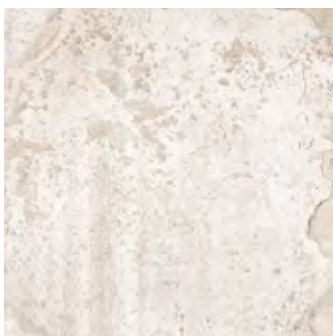
24" x 24" Rectified

Dark Grey	1096343
Light Grey	1096344
Manhattan Grey	1096348
Miami White	1096349
Moon White	1096350
Multicolor	1096342

COLORS



MOON WHITE



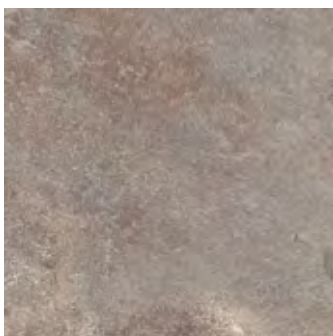
MIAMI WHITE



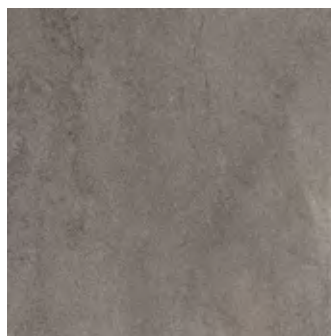
MANHATTAN GREY



LIGHT GREY



MULTICOLOR



DARK GREY







▲ **EARTH** | MOON WHITE 24" x 24" + 12" x 24" COPING



▲ **EARTH** | MIAMI WHITE 24" x 24"

Tile removed to show raised installation on pedestals.
For more information, see pg. 39.





▲ **EARTH** | DARK GREY 24" x 24"



FARMHOUSE LIVING

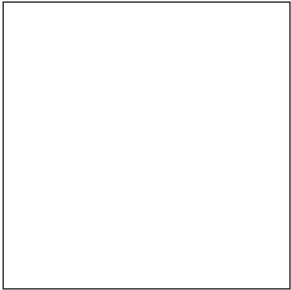
STONE LOOK

SIZES



24" x 48" Rectified

Alabaster	1104235
Pewter	1104236
Millstone	1104237
Slate	1104238



24" x 24" Rectified

Alabaster	1104240
Pewter	1104241
Millstone	1104242
Slate	1104243

COLORS



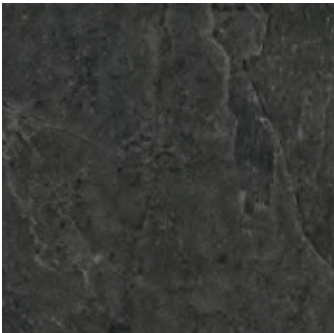
ALABASTER



PEWTER



MILLSTONE



SLATE



▲ **FARMHOUSE LIVING** | PEWTER 24" x 48"



▲ FARMHOUSE LIVING | MILLSTONE 24" x 48"



SIZES



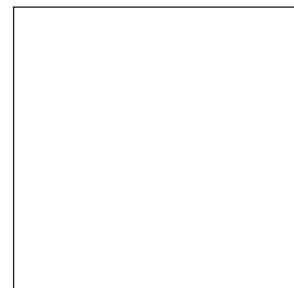
24" x 48" Rectified

Heirloom Blue	1103563
Antique Cream	1103562
Legacy White	1103561



24" x 36" Rectified

Heirloom Blue	1103585
Antique Cream	1103584
Legacy White	1103582



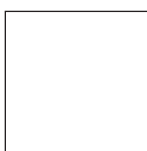
24" x 24" Rectified

Heirloom Blue	1103575
Antique Cream	1103574
Legacy White	1103573



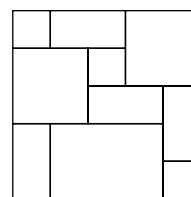
12" x 24" Rectified

Heirloom Blue	1103578
Antique Cream	1103577
Legacy White	1103576



12" x 12" Rectified

Heirloom Blue	1103581
Antique Cream	1103580
Legacy White	1103579



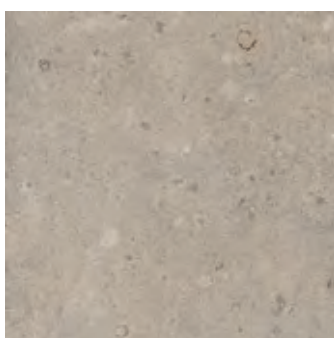
Multisize Pattern

Uses: 24" x 36", 24" x 24", 12" x 24", 12" x 12"

COLORS



HEIRLOOM
BLUE



ANTIQUE
CREAM



LEGACY
WHITE





▲ **LITH** | LEGACY WHITE 24" x 24" + 24" x 48"



MOOD WOOD



WOOD LOOK

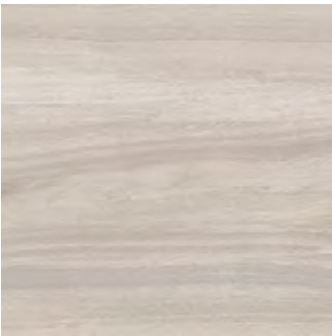
SIZES



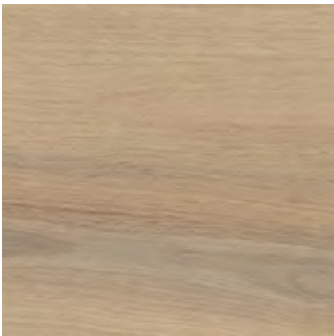
12" x 48" Rectified

White	1100818
Honey	1100819
Grey	1100822

COLORS



WHITE



HONEY



GREY



▲ **MOOD WOOD** | HONEY 12" x 48"





QUARTZ

STONE LOOK

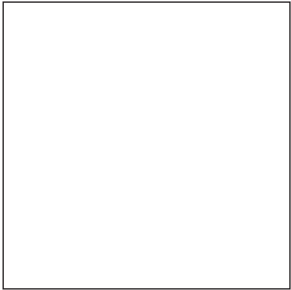


SIZES



24" x 48" Rectified

Extra White	1101846
White	1101421
Grey	1101422



24" x 24" Rectified

Extra White	1101848
White	1101426
Grey	1101427



12" x 48" Rectified

Extra White	1101847
White	1101423
Grey	1101424

COLORS



EXTRA WHITE



WHITE



GREY



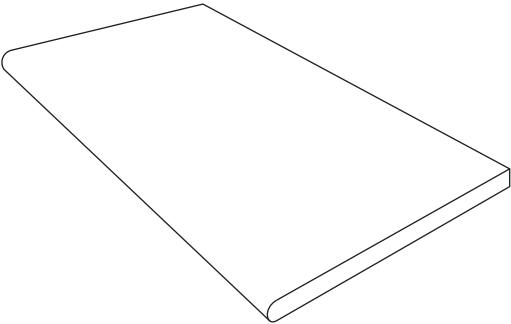
▲ **QUARTZ** | WHITE 12" x 48" + 24" x 24"



▲ **QUARTZ** | GREY 24" x 24"

TRIM SPECIFICATIONS

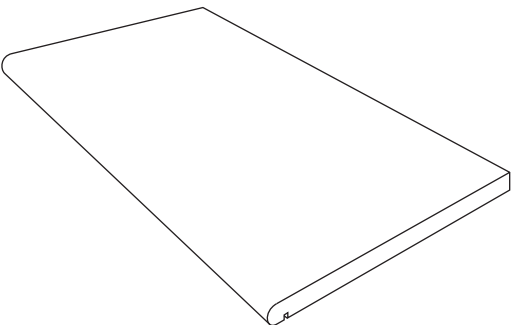
COPING



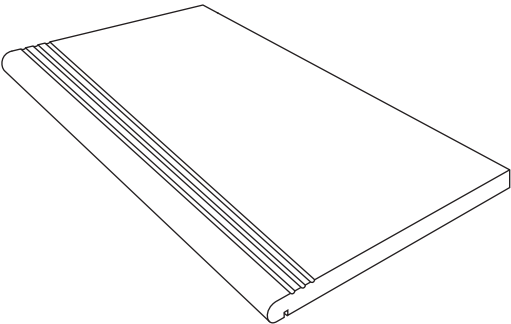
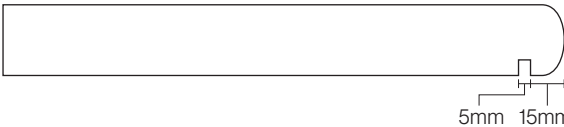
12" x 24" Coping

Edge Details:

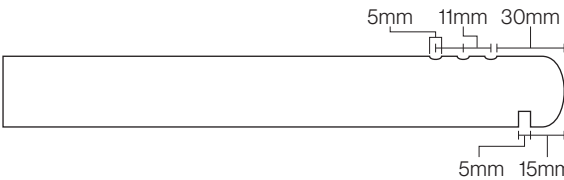
Radius: 10mm Diameter: 20mm

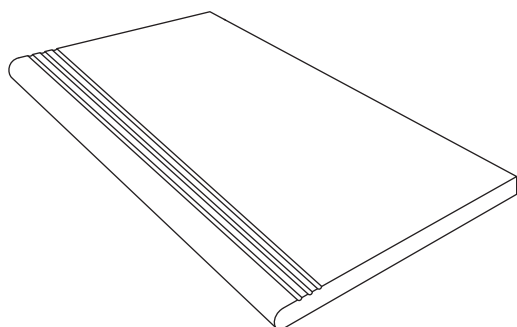


12" x 24" Drain Coping



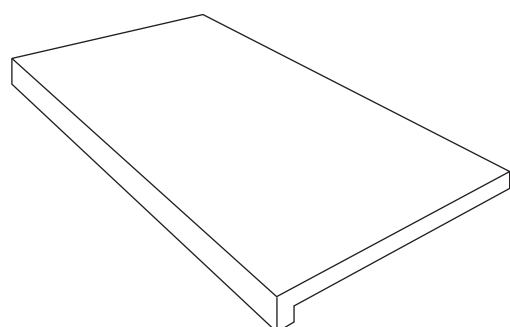
12" x 24" Drain Coping with Stair Tread



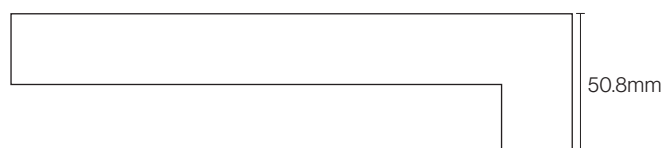


12" x 24" Coping with Stair Tread

Edge Details:



12" x 24" L-Shaped Coping












Trim pieces and field tiles may come in different shades, the slab's edge may show layers of differing hues.

Outdoor coping trim pieces available through special order only. Contact your sales representative for more information.

TECHNICAL SPECIFICATIONS

This product meets or exceeds all standards described in ANSI A137.3.
Este producto cumple o excede todos los estandares de ANSI A137.3.

	SPECS	TEST METHOD	INDUSTRY STANDARD	MILE®stone VALUES
	D.C.O.F.	ANSI A326.3	> 0.42 WET	> 0.55 WET
	FREEZE / THAW RESISTANCE	ASTM C1026	AS REPORTED	RESISTANT
	CHEMICAL RESISTANCE	ASTM C650	AS REPORTED	NOT AFFECTED
	STAIN RESISTANCE	ASTM C1378	AS REPORTED	NOT AFFECTED
	MAXIMUM STRAIGHTNESS DEVIATION % IN RELATION TO CORRESPONDING PRODUCT DIMENSIONS	ASTM C485	± 0.40% (± 1.3 mm)	± 10%
	THICKNESS VARIATION (THICKNESS RANGE WITHIN A MEASURED SAMPLE TESTED)	ASTM C499	± 1.5 mm (± 0.06 in)	± 0.5%
	LENGTH & WIDTH ADMITTED DEVIATION % OF AVERAGE SIZE OF EACH TILE FROM THE PRODUCTION DIMENSIONS	ASTM C499	± 0.5% (± 2 mm)	± 0.15%
	WATER ABSORPTION	ASTM C373	≤ 0.5%	≤ 0.5%
	BREAKING STRENGTH	ASTM C1505	≥ 2000 lbf AVERAGE (10.9 Kn)	≥ 2700 lbf INDIVIDUAL
	RESISTANCE OF DEEP ABRASION OF UNGLAZED TILES	ASTM C1243	175 mm³	< 150 mm³
	THERMAL SHOCK RESISTANCE	ASTM C484	PASS	MEETS REQUIREMENT

• Due to the inherent nature of fired porcelain tile, it is important to note that the coefficient of friction may vary within and between product runs.

CLEANING & MAINTENANCE / ROUTINE CARE INSTRUCTIONS



Scan the QR code with your smartphone.

PACKAGING SPECIFICATIONS

SIZES		THICKNESS (MM)	PIECES PER BOX	UOM PER BOX	WEIGHT PER BOX	BOXES PER PALLET	UOM PER PALLET	WEIGHT PER PALLET*
FIELD TILES								
12"x12" RECTIFIED	NOMINAL	20 mm	5	5 SF	45 LBS	45	225 SF	2,025 LBS
12"x24" RECTIFIED	NOMINAL	20 mm	4	8 SF	72 LBS	40	320 SF	2,880 LBS
12"x48" RECTIFIED	NOMINAL	20 mm	4	16 SF	147 LBS	16	256 SF	2,352 LBS
24"x24" RECTIFIED	NOMINAL	20 mm	2	8 SF	72 LBS	36	288 SF	2,592 LBS
24"x36" RECTIFIED	NOMINAL	20 mm	2	12 SF	108 LBS	16	192 SF	1,728 LBS
24"x48" RECTIFIED	NOMINAL	20 mm	2	16 SF	144 LBS	16	256 SF	2,304 LBS
QUARTZ 24"x48" RECTIFIED	NOMINAL	20 mm	2	15.5 SF	139.5 LBS	16	248 SF	2,232 LBS
COPING								
12"x24" COPING	NOMINAL	20 mm	4	8 SF	73.6 LBS	40	160 PCS	2,944 LBS
12"x24" STAIR TREAD COPING	NOMINAL	20 mm	4	8 SF	73.6 LBS	40	160 PCS	2,944 LBS
12"x24" DRAIN COPING	NOMINAL	20 mm	4	8 SF	73.6 LBS	40	160 PCS	2,944 LBS
12"x24" DRAIN COPING WITH STAIR TREAD	NOMINAL	20 mm	4	8 SF	73.6 LBS	40	160 PCS	2,944 LBS
12"x24" L-SHAPED COPING	NOMINAL	20 mm	4	8 SF	73.6 LBS	40	160 PSC	2,944 LBS

*WEIGHT PER PALLET DOES NOT INCLUDE PALLET WEIGHT ITSELF. All other sizes will be packaged as ordered.

Please contact MILE®stone Customer Service at 1-877-356-7461 for packaging information.

Minimum grout size recommended = 5 mm (or approx. 3/16") If staggered tile placement, we recommend using a 30% offset. If specified brick pattern with 1/2 pattern mandatory, a bigger grout is recommended to hide imperfections of installation (minimum 1/4").

INSTALLATION METHODS

DRY LAY ON GRASS OR SAND



DIY Video

MATERIALS:

- Outdoor 2cm Porcelain Pavers
- Paving Sand (optional)

Direct lay installations are the easiest, fastest, and most DIY-friendly way to lay your porcelain pavers. Perfect for garden pathways or a makeshift patio, consider digging out 2" of soil and pouring road base into the hole before laying the pavers to ensure a more stable and quick-draining walkway.

DRY LAY ON GRAVEL



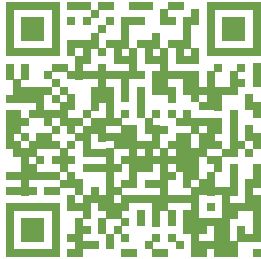
DIY Video

MATERIALS:

- Outdoor 2cm Porcelain Pavers
- Road-base Gravel

Perfect for patios and other outdoor large seating areas, installing over gravel allows for a more permanent and solid foundation for your pavers, while maintaining the ease and simplicity of DIY installation.

ADHESIVE INSTALLATION



DIY Video

MATERIALS:

- Outdoor 2cm Porcelain Pavers
- Concrete Base
- Cement Based Adhesive
- Outdoor Grout

Have an old stained and worn down concrete slab patio you're looking to refresh? Look no further, as our porcelain pavers can be installed over a concrete base, revitalizing your existing outdoor foundations.

DRY LAY ON RAISED PEDESTALS
















DIY Video

MATERIALS:

- Outdoor 2cm Porcelain Pavers
- Level Concrete Base
- Support Pedestals

Most suitable for commercial applications, installing on raised pedestals allows for excellent drainage. Also hides unsightly wiring, piping, or duct work, while keeping it all easily accessible.

Green Certifications & Accreditations

DESCRIPTION	
 Declare.	<p>Declare labels disclose all intentionally added ingredients and residuals present in the final product. Being Red List Free means the worst materials, chemicals, and elements for human and environmental health are not present within our products.</p>
 hpd <small>VERSION 2.0</small>	<p>The Health Product Declaration Collaborative transparency declaration for all of Florim USA's naturally occurring materials.</p>
 EPD® <small>THE INTERNATIONAL EPD® SYSTEM</small>	<p>Certification of plant and product specific Environmental Product Declaration (EPD) which tracks environmental impacts from the production of porcelain tile.</p>
 GREEN SQUARED	<p>Tile Council of North America and the American National Standards Institute's standard for sustainability and environmental impact.</p>
 GREENGUARD <small>GREENGUARD GOLD</small>	<p>Underwriter's Laboratories certification of low emitting materials. Florim USA is Green Guard Gold certified.</p>
 BUREAU VERITAS <small>Product Certification</small>	<p>Bureau Veritas Standards Program verifies and certifies both pre- and post-consumer recycled content.</p>
 POST - Consumer Recycled Content	<p>Defines post-consumer content of as much as 3% recycled material which reduces landfill impact.</p>
 PRE - Consumer Recycled Content	<p>Defines pre-consumer content of as much as 45% recycled material which reduces our carbon footprint.</p>
 INTERNATIONAL LIVING FUTURE INSTITUTE™	<p>Florim USA's sustainability and social practices support the mission of The International Living Future Institute which strives to create a socially just, culturally rich, and ecologically restorative community.</p>
 U.S. GREEN BUILDING COUNCIL MEMBER	<p>USGBC is committed to suit a more sustainable life. Florim USA supports this mission by manufacturing products which aid architects in achieving USGBC certification.</p>
	<p>Florim USA sources >95% raw material within a 500 mile radius, which results in a smaller carbon footprint.</p>
 TCNA <small>TILE COUNCIL OF NORTH AMERICA, INC.</small>	<p>Florim USA actively participates in the Tile Council of North America which allows us to be on the forefront of advances in the tile industry and its standards.</p>
 TENNESSEE RECYCLING COALITION	<p>The Tennessee Recycling Coalition is dedicated to promoting recycling and sustainable material management practices, and awarded Florim USA the Tennessee Recycler of the Year award for 2020.</p>

This product meets or exceeds all standards described in ANSI A137.1.
 Este producto cumple o excede todos los estandares de ANSI A137.1.

Progress that invests in the entire society

As an active member of the U.S. Green Building Council, MILE[®]stone spreads awareness to the community and encourages the use of building solutions through environmentally friendly practices.

Our products positively contribute to the requirements for obtaining the LEED (Leadership in Energy and Environmental Design) and WELL (IWBI) certifications.

A commitment to environmental sustainability and responsibility

We are committed to conscious development that minimizes the negative impact of manufacturing production on the environment. Our general approach to sustainability intersects with our business strategy to embrace three areas of responsibility: economic, social, and environmental. Some ways we prove this are:

- Products containing as much as 45% recycled content.
- Post-consumer recycled content levels as much as 3%.
- Zero industrial wastewater discharge.
- A 99% internal process recycling rate.
- Local sourcing of >95% raw materials (within 500-mile radius of factory) resulting in low transportation related carbon emissions.

MILE[®]stone is taking these and other steps, as well as actively investing to reduce carbon emissions to ensure that we reach full carbon neutrality by 2030.



MADE IN THE USA



300 International Blvd. Clarksville, TN 37040 | www.milestonetiles.com | 1-877-356-7461

